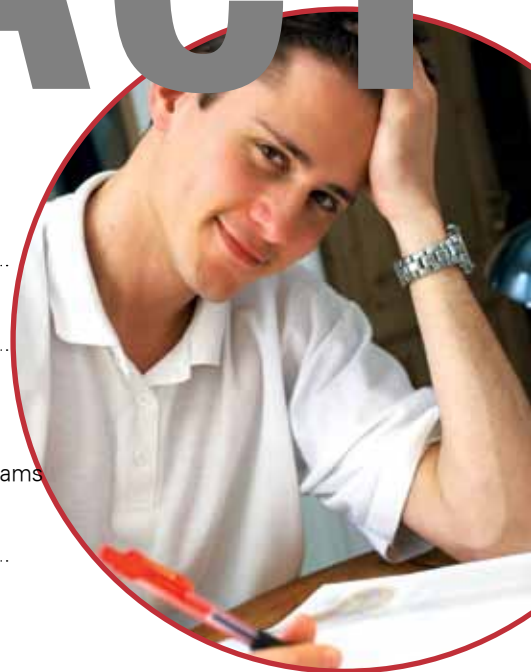


[Everything you need to know]

SAT & ACT



SAT

How often is it administered?

Seven times per year

What is the test structure?

Ten-section exam:
Three Critical Reading, three Math, three Writing (the first of which is the Essay), and one experimental section masked to look like a regular section

What is the test content?

Math: Fundamentals through 10th grade math, including Geometry and limited Algebra II
Reading: Sentence completions, short and long critical reading passages, Reading comprehension
Writing: limited grammar rules, word usage, word choice, and a mandatory essay

Is there a penalty for wrong answers?

Yes, 1/4 of a point for each wrong answer on multiple-choice questions

How is the test scored?

200–800 per section, added together for a total score of 600–2400
0–12 for the essay

Are all scores sent to schools?

Unless you enroll in Score Choice, all of your scores will be reported to colleges.

Are there other uses for the exams?

Scholarship purposes
Certain statewide testing programs

Need more information?

Educational Testing Service (ETS):
609-921-9000, ETS.org;
The College Board: collegeboard.com

ACT

Six times per year

Five-test exam:
Math, English, Reading, Science and Writing (optional)
An Experimental test is added to exams on certain dates only and is clearly experimental.

Math: up to trigonometry
English: Usage/Mechanics and Rhetorical Skills
Reading: four passages, one each of Prose Fiction, Social Sciences, Humanities, and Natural Sciences
Science: charts, graphs, data interpretation
Writing: optional essay

No

1–36 for each test, averaged together for a composite score of 1–36
2–12 for the Writing test

You can choose which scores get sent to colleges.

Scholarship purposes
Certain statewide testing programs

ACT, Inc.:
319-337-1270
ACT.org

(852) 2507 9380 • PrincetonReviewHK.com

**The
Princeton
Review**
Hong Kong